

KEY

I-394 Corridor



2nd Avenue North



2nd Avenue North - Under Ramps



Light Rail



I-394: Between Target Field
and Target Center



All architectural elements of the site are scaled to the larger urban context, not the pedestrian.

I-394 has strong visual presence from perimeter of Target Plaza and surrounding pedestrian bridges.



Medians do not visually separate lanes of traffic.

I-394 tunnel becomes focus of attention.

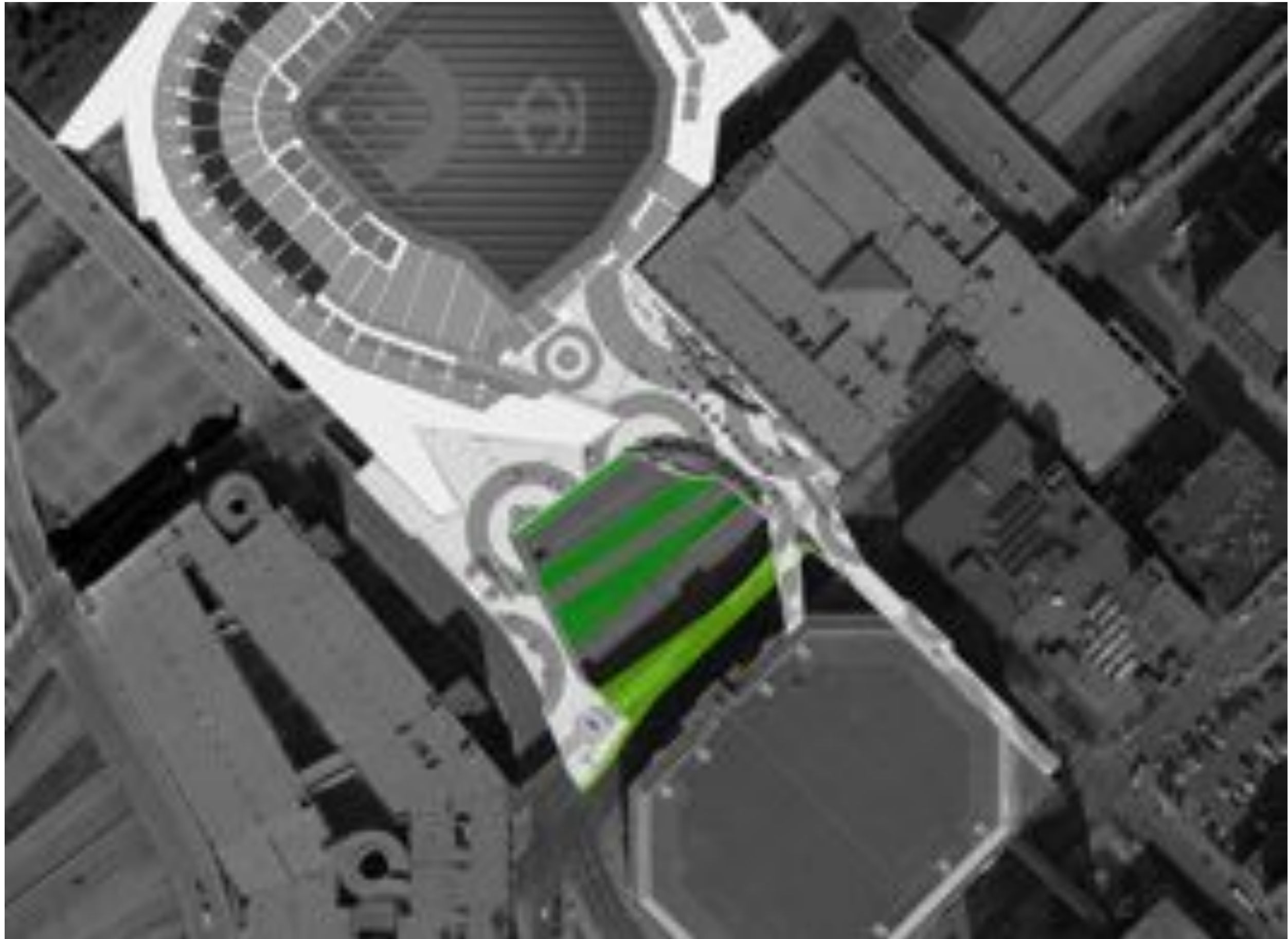
Minimal pedestrian separation from I-394.



Precedent: 35E Parkway - St. Paul, Minnesota
Provides extensive landscaping in the median and accommodations for bicyclists and pedestrians.



Precedent: El Dorado Architects - Pedestrian Strands - Kansas City, Missouri
Reparation of interrupted pedestrian experiences created by interstates, and railways.



KEY

I-394 Medians



2nd Avenue North Median



